



Technical Data Sheet

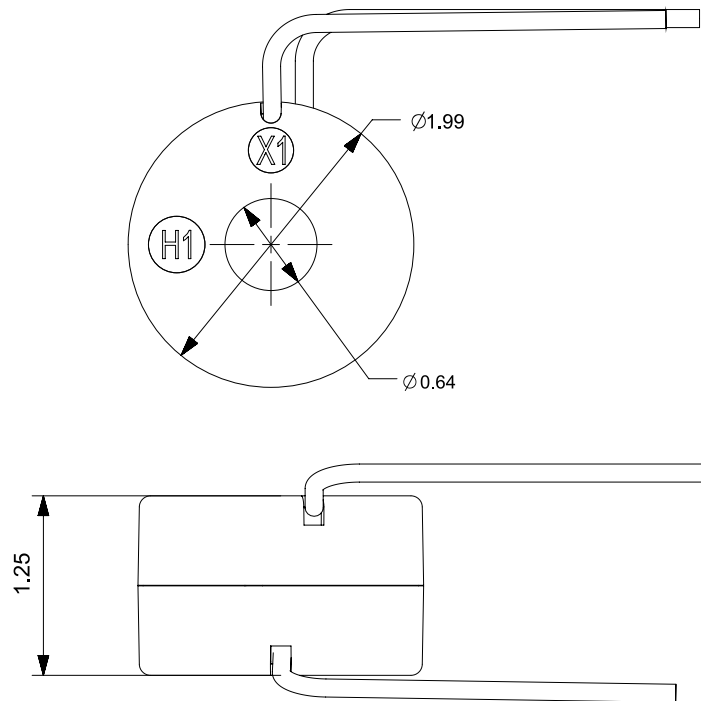
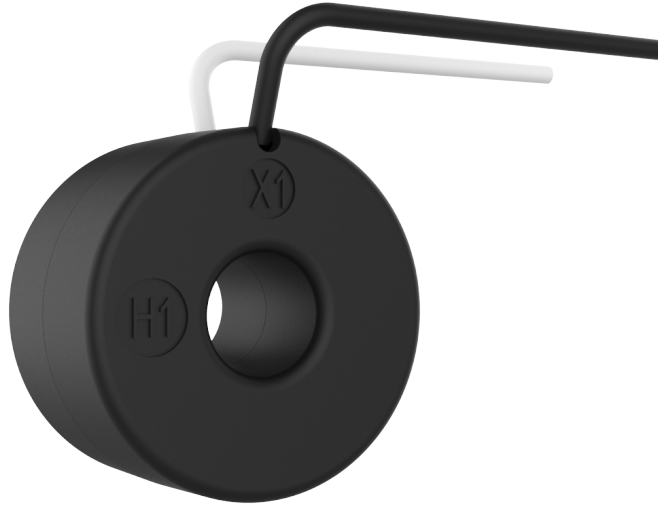
*Omega ANSI
Current Transformer Series*



*Omega 30
1RL*



Omega 30 - 1RL



*All the mentioned dimensions are in inches

Omega 30 - 1RL

| Current Ratio | Accuracy @ 60 HZ | Burden VA @ 60 HZ |
|----------------------|-------------------------|--------------------------|
| 50:5 | ± 2% | 1 |
| 60:5 | ± 1% | 2 |
| 75:5 | ± 1% | 2 |
| 80:5 | ± 1% | 2 |
| 100:5 | ± 1% | 2.5 |
| 120:5 | ± 1% | 3 |
| 125:5 | ± 1% | 3 |
| 150:5 | ± 1% | 4 |
| 200:5 | ± 1% | 5 |
| 250:5 | ± 1% | 7.5 |

Specification

- FREQUENCY : 50 -400 Hz
- INSULATION LEVEL : 600 Volts. 10kV BIL. full wave
- WINDOW : 0.64"
- APROXIMATE WEIGHT : 0.42 lbs
- CONNECTIONS :
 - Flexible Leads are UL 1015 105°C, CSA approved #16AWG, 24" long
 - Non-standard length to be specified
 - 1 Amp, and other secondary currents available upon request

Application

- APPLICATION : With ammeters, energy management systems and instrumentation

Sifam Tinsley Instrumentation Inc.

Address: 2105 Barrett Park Dr, Unit 105, Kennesaw, GA 30144

Tel.: 800-879-6171 | **E-mail:** info@sifamtinsley.com | **Web:** www.sifamtinsley.com
