

SM61 Data Logger With www Server

Features



MOD
BUS
RTU



SM61
Config



HTTP/TCP/UDP
Protocol

Inputs/Outputs

RS
485

RS
232

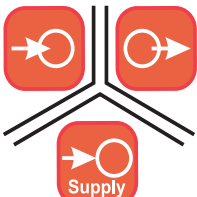
USB



or

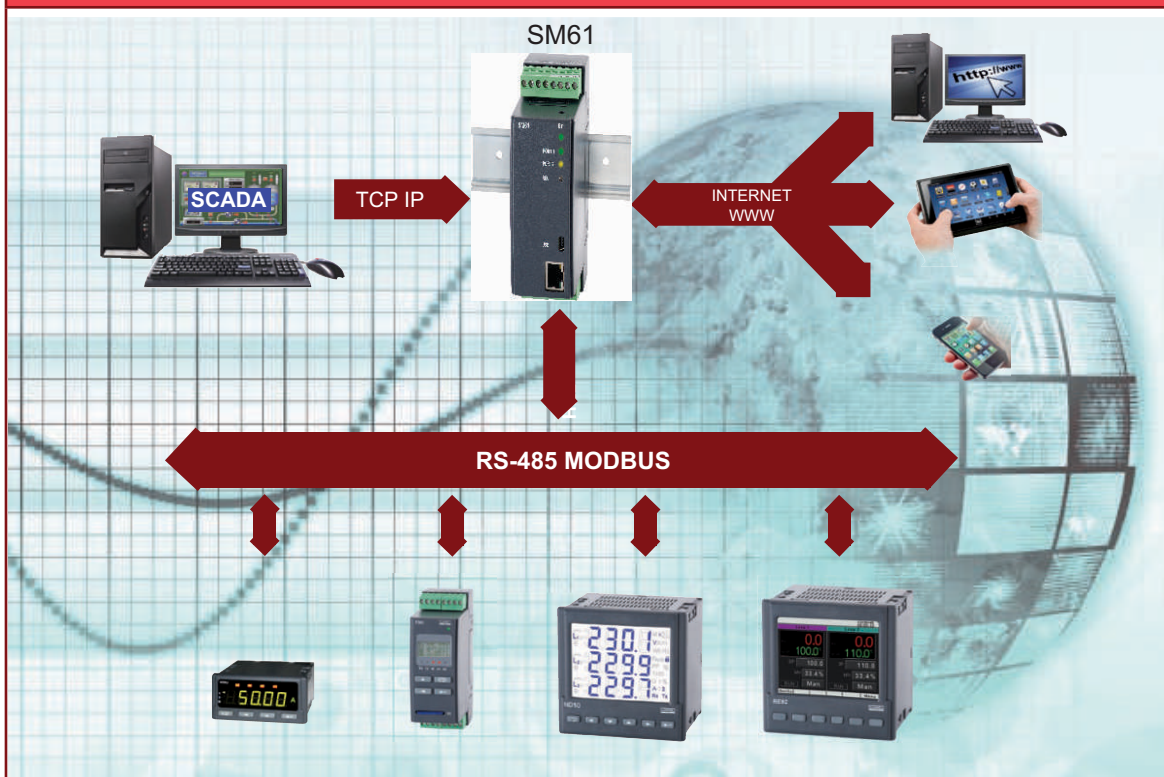


Galvanic Isolation



- Visualisation of current and archived data according to customer configuration (synoptic maps, charts, tables) by any web browser.
- Readout up to 2500 values from slave devices (up to 100 devices, each 25 registers).
- User-friendly application for data configuration.
- 1 GB Flash memory.
- Built-in FTP and web servers.
- Alarms or binary inputs for control of archiving.
- RTC (real time clock).
- Possibility of simultaneously work by many users.
- User access control by a password.

Application example



Configuration and Visualisation by any web browser

Data logger SM61

General data:
Name: SM61
IP: 10.0.17.100
User name: root
Used space: 3%

Channel values:

Channel number	Value number	Device address	Register address	Register type	Name	Value	Add to the chart	Status
1	1	L	4000	Reg4001	Umsn_1	5.00 V	SP	
2	1	L	4002	Reg4002	Umsn_2	5.10 V	SP	
2	2	L	4006	Reg4001	Imms_1	2.20 mA	F	
2	3	L	4010	Reg4001	Imms_2	1.00 mA	F	
3	4	L	4012	Reg4001	Imms_4	9.80 mA	F	
3	1	L	4014	Reg4001	meter_1	200.00 kWh	F	
4	1	L	4016	Reg4001	meter_2	10.00 kWh	F	
4	1	L	4018	Reg4001	U_L	229.83 V	F	
4	2	L	4020	Reg4001	I_L	4.53 A	F	
5	1	L	4014	Reg4001	U_L	200.60 V	F	
5	2	L	4016	Reg4001	I_L	10.64 A	F	

- Configuration web:**
- configuration of IP settings and connection configuration of selected SM61 module,
 - channels configuration of SM61 module,
 - channels visualization of SM61 module.

Sifam Tinsley Instrumentation Ltd
Unit 1 Warner Drive,
Springwood Industrial Estate
Braintree, Essex, UK, CM72YW
E-mail: sales@sifamtinsley.com
Web: www.sifamtinsley.com/uk
Contact: +44(0)1803615139



Sifam Tinsley Instrumentation Inc.
3105, Creekside Village Drive,
Suite No. 801, Kennesaw,
Georgia 30144 (USA)
E-mail: psk@sifamtinsley.com
Web: www.sifamtinsley.com
Contact No.: +1 404 736 4903



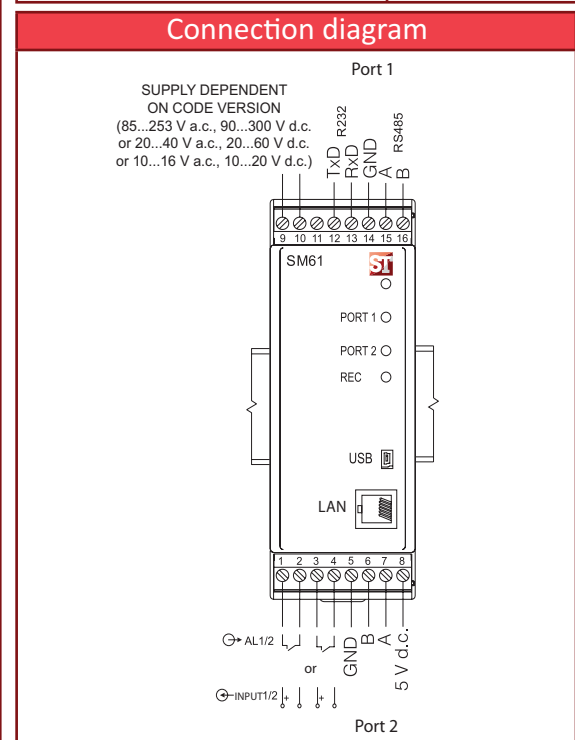
SM61 Data Logger With Www Server

Interface				
Interface	Port 1:RS-485, RS-232,	Port 2: RS-485	USB	Ethernet 10/100Base-T
Function	communication with PC and HMI panels and other master devices	communication with Slave devices	device configuration	device communication and configuration
Baud rate	1200, 2400, 4800, 9600, 19200, 38400, 57600, 115200 bit/s		115200 bit/s	10, 100 Mbit/s
Information unit	1 start bit, 7 or 8 data bits, 1 odd/even parity bit, 1 or 2 stop bits		1 start bit, 8 data bits, 1 even parity bit, 1 stop bit	TCP/UDP
Transmission protocol	MODBUS RTU			TCP/IP, HTTP, ICMP, DHCP, ARP, Modbus TCP, FTP
Remarks	max. cable length depends on the baud rate		max. cable length: up to 2 m	max. cable length: up to 100 m

External features		
Weight	< 0.25 kg	
Overall dimensions	45 X120 X 100 mm	
Protection grade (acc. to EN 60529)	from the housing side: IP40	from the terminal side: IP20
Fixing way	DIN rail 35 mm	

Rated operating conditions		
Supply voltage	20...24...40 V a.c., 20...24...60 V d.c. 10...16 V a.c. , 10...20 V d.c. 85...230...253 V a.c., 90...300 V d.c.	power consumption: < 4 VA 40...50/60...440 Hz
Temperature	ambient: 0...23...55°C	storage: -20...70°C
Relative humidity	≤ 95%	condensation inadmissible
Operating position	any	
External magnetic field	< 400 A/m	

Safety and compatibility requirements		
Electromagnetic compatibility	noise immunity	acc. to EN 61000-6-2
	noise emissions	acc. to EN 61000-6-4
Safety requirements	installation category III	acc. to EN 61010-1
	pollution grade 2	
Maximal phase-to-earth operating voltage	for supply circuits: 300 V	
	for other circuits: 50 V	



Ordering Code

Code	SM61 -	X	X	XX	X	X
Supply voltage:						
85...253 V a.c., 90...300 V d.c.		1				
20...40 V a.c., 20...60 V d.c.			2			
10...16 V a.c., 10...16 V a.c.				3		
Input/output:						
2 relay outputs			1			
2 binary inputs				2		
Version:						
standard				00		
custom-made*				XX		
Language:						
Polish					P	
English						E
other*						X
Acceptance tests:						
without extra requirements						0
with an extra quality inspection certificate						1
acc. to customer's request*						X

* after agreeing with the manufacturer

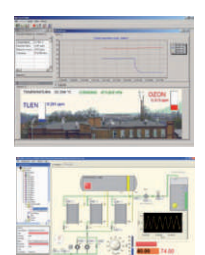
Order example:

The code **SM61 - 1 2 00 E 1** means the SM61 industrial www server, with voltage supply 85...253 V a.c., 90...300 V d.c with 2 binary inputs, standard version, English language, with an extra quality inspection certificate.

See Also



I/O modules SM series
SM1, SM2, SM3, SM4, SM5.



SCADA
Sifam-Process
For more information about Sifam's products please visit our website: www.sifamtinsley.com



HMI panels HMI series.

Sifam Tinsley Instrumentation Ltd
Unit 1 Warner Drive,
Springwood Industrial Estate
Braintree, Essex, UK, CM72YU
E-mail: sales@sifamtinsley.com
Web: www.sifamtinsley.com/uk
Contact: +44(0)1803615139



Sifam Tinsley Instrumentation Inc.
3105, Creekside Village Drive,
Suite No. 801, Kennesaw,
Georgia 30144 (USA)
E-mail Id : psk@sifamtinsley.com
Web : www.sifamtinsley.com
Contact No. : +1 404 736 4903