



Technical Data Sheet

Gold Series Taut Band Switchboard Meters



High quality range of Switchboard Instruments to meet you every needs, complying with ANSI-C39.1(1981) specification. Model is available in 110mm square size 250° to measure all electrical quantities. All switchboard instruments in the series features rugged, friction free and shock resistant taut-band suspension element.

Special Features

- Taut Band suspension -- eliminate friction and protects against shock
- Platform scale -- No shadow on scale and readable, even from share angles
- Easy to read linear scale and wide angle deflection
- Provide terminal protection cover for safety



Application Areas

- Switchgear.
- Distribution systems.
- Generator sets.
- Control panels.
- Energy management.
- Building management.
- Utility power monitoring.
- Process & Motor control.

Benefits

- Meets all the requirements of ANSI-C39.1 (1981).
- Parallax error-free platform dials.

Case Details

- Non-flammable plastic case.
- Panel mounting is by four integral studs.

Front Cover Details

- Front Cover has 2k Moulded bezel made by flame retardant Polycarbonate.
- A specially contoured window to minimize reflection from adjacent light sources.

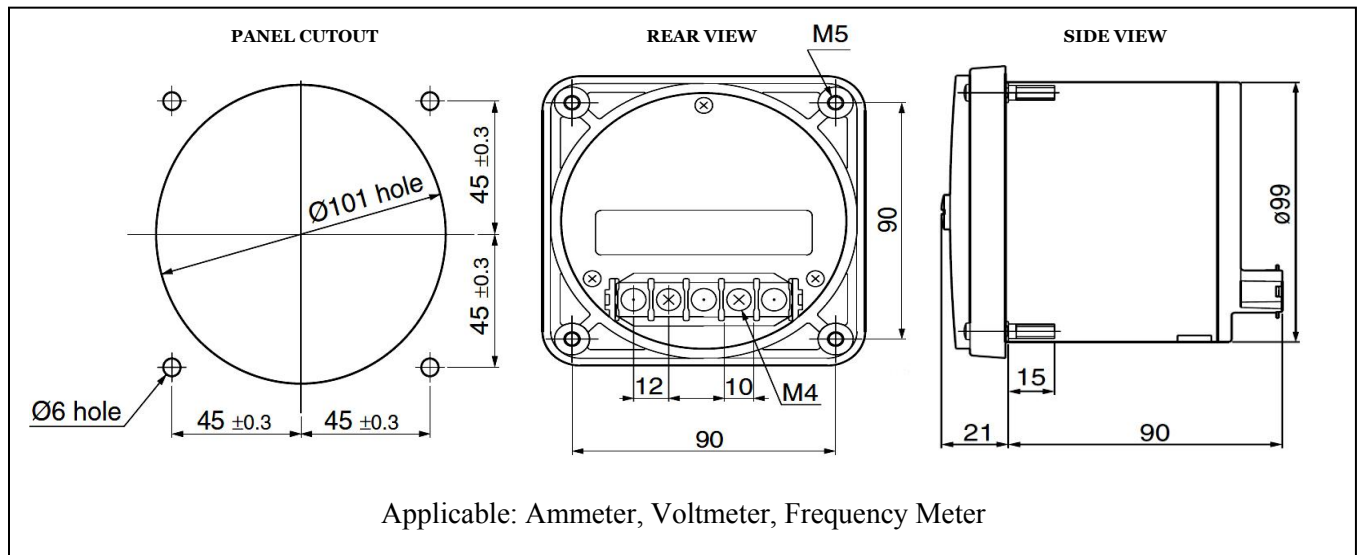
Scales

- Scales are of span 250° division markings with parallax error-free platform dials.
- Standard dials are white matte with black printed divisions and Lance type black pointers.

Specifications

Performance	: ANSI C39.1 (1981)
Accuracy	: Refer Meter Types
Terminals	: M4 terminals
Dielectric voltage	: Withstand test 2.3 kV for 1 minute
Response time	: Approximately 2.5 seconds to full scale
Overshoot	: 33 % maximum
Standard calibration	: 23°C ± 2°C (73.4°F ± 35.6°F)
Operating temperature	: 0°C to +40°C (32°F to +104°F)
Storage temperature	: -10°C to +50°C (14°F to +122°F)
Extreme Temp Range	: -20°C to +65°C (-4°F to +149°F)
Fixing on panel	: 4 integral M5 fixing studs

Dimensions



Product Ranges

Sr. No.	Type of input	Ranges	Model
1	DC Voltmeter	50 mV - 600V	YPL1
2	DC Ammeter	300 μ A - 30A	YPL1
3	AC RMS Voltmeter	50V - 600 V	YVL1
4	AC Average Voltmeter	3V - 600 V	YVL1
5	AC RMS Ammeter	1A - 30A	YVL1
6	AC Average Ammeter	300 μ A - 500mA	YVL1
7	Frequency Meter	45 - 450 Hz	YZL1

AC & DC Ammeters, Voltmeter & Frequency Meters

This range of self contained, taut band moving coil meters features 250° linear scale.

High quality range of Switchboard Instruments complying with American ANSI-C39.1 (1981) specifications.

Available in 4^{1/2}” case size, their rugged design characteristics meet the needs of the most demanding environmental applications.

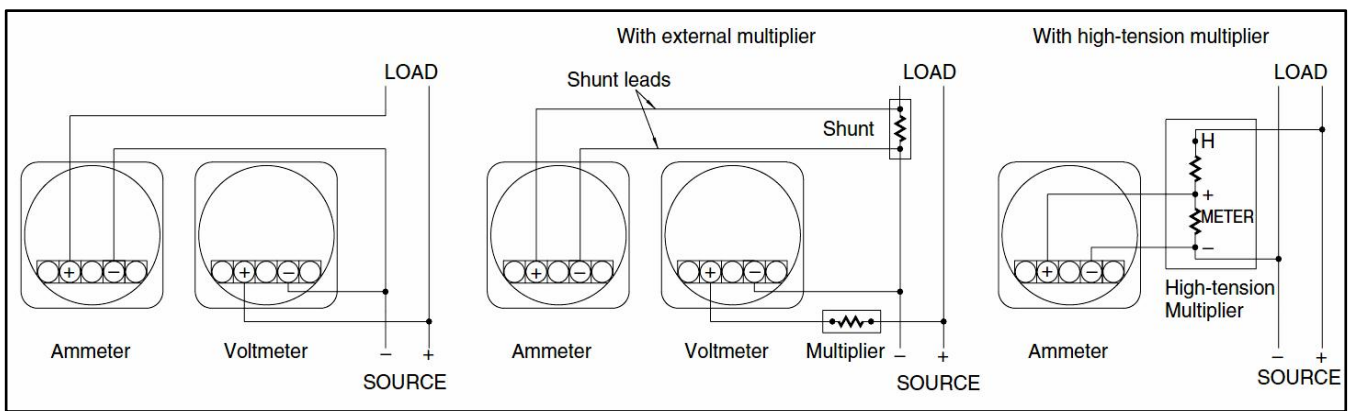


Fig. 1 Connection Diagram for DC Voltmeter/ Ammeter

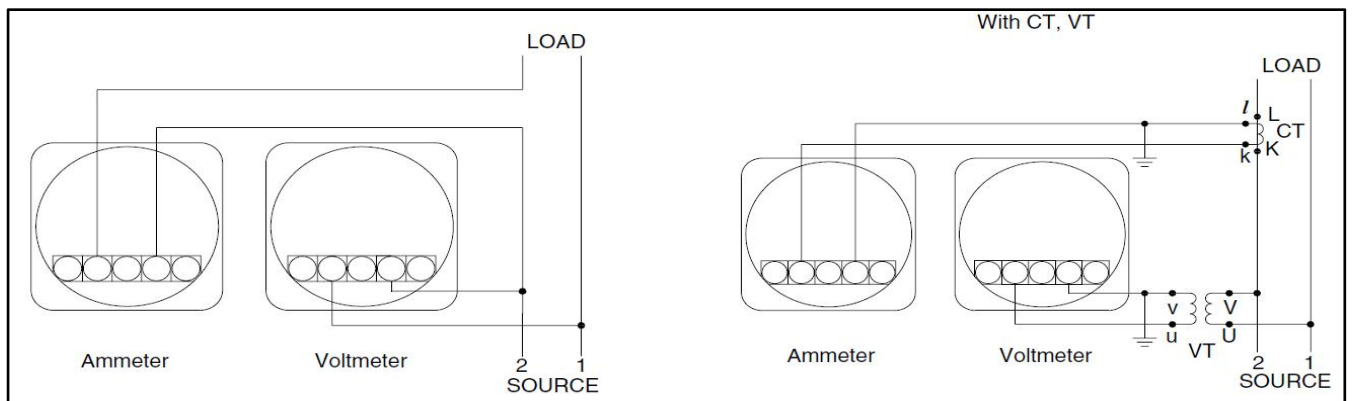


Fig. 2 Connection Diagram for AC Voltmeter/ Ammeter

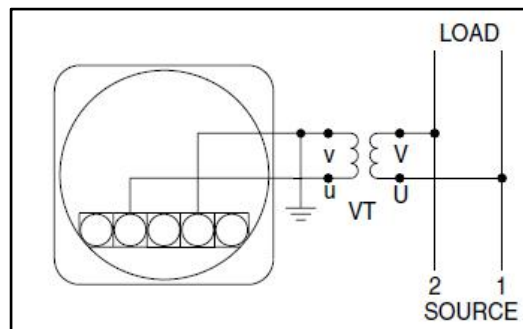


Fig. 3 Connection Diagram for Frequency Meter

Specification : General

Manufactured in accordance with American National Standards ANSI C39.1, (1981)

Accuracy	: Refer Meter Types
Scales arc	: 250° full scale deflection
Scale length	: Approx. 196 mm (7.7")
Scale plate	: 2 piece, platform type
Response time	: Approximately 2.5 seconds to full scale
Operating temperature	: 0 to 40°C (32 to 104°F)
Storage temperature	: -10 to +50°C (14 to 122°F)
Extreme temp range	: -20°C to +65°C (-4+149°F)
Terminals	: Standard M4 terminal.
Dielectric withstand	: Withstand test 2.3 kV for 1 minute
Overshoot	: 33% maximum
Position of use	: Vertical (Scale)

DC Voltmeter

Product Ranges – Self Contained

Sensitivity 1000 OHMS / Volts

(Accuracy $\pm 1\%$)

Ratings	Scaling
50 mV	0 - 50 mV
1V	0-1V
3V	0-3V
5V	0-5V
10V	0-10V
30V	0-30V
50V	0-50V
100V	0-100V
300V	0-300V
500V	0-500V
600V	0-600V



Product Ranges – Suppressed Zero

Ratings	Scaling
1-5V	1-5V

DC Ammeters

Product Ranges – Self Contained
(Accuracy $\pm 1\%$)

Ratings	Scaling
300 μ A	0-300 μ A
500 μ A	0-500 μ A
1mA	0-1mA
3mA	0-3mA
5mA	0-5mA
10mA	0-10mA
30mA	0-30mA
50mA	0-50mA
100mA	0-100mA
300mA	0-300mA
500mA	0-500mA
1A	0-1A
1.5A	0-1.5A
2A	0-2A
3A	0-3A
5A	0-5A
7.5A	0-7.5A
10A	0-10A
15A	0-15A
20A	0-20A
30A	0-30A



Product Ranges – Suppressed Zero

Ratings	Scaling
10-50mA	10-50mA
4-20mA	4-20mA

AC RMS Voltmeter

Product Ranges – Self Contained
(Accuracy $\pm 1.5\%$)

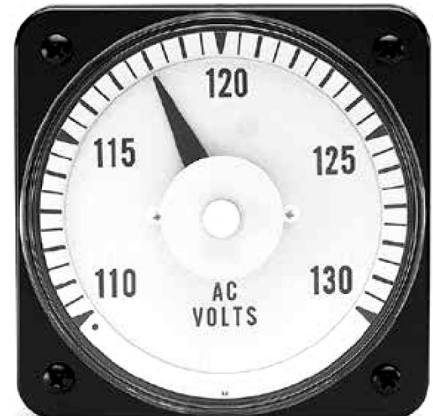
Ratings	Scaling
50V	0-50V
100V	0-100V
150V	0-150V
300V	0-300V
600V	0-600V



AC Average Voltmeter

Product Ranges – Self Contained
(Accuracy $\pm 1.5\%$)

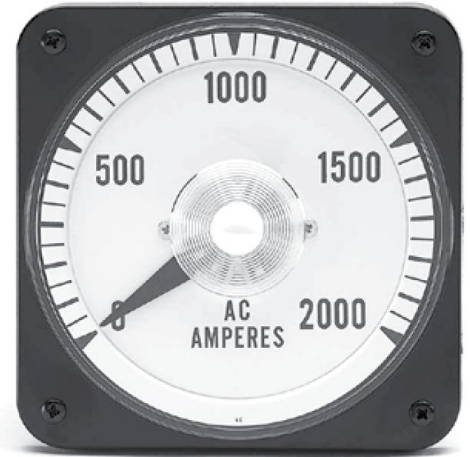
Ratings	Scaling
3V	0-3V
5V	0-5V
10V	0-10V
30V	0-30V
50V	0-50V
100V	0-100V
150V	0-150V
300V	0-300V
600V	0-600V



AC RMS Ammeters

Product Ranges – Self Contained
(Accuracy $\pm 1.5\%$)

Ratings	Scaling
1A	0-1A
3A	0-3A
5A	0-5A
10A	0-10A
30A	0-30A



AC Average Ammeters

Product Ranges – Self Contained

(Accuracy $\pm 1.5\%$)

Ratings	Scaling
300 μ A	0-300 μ A
500 μ A	0-500 μ A
1mA	0-1mA
3mA	0-3mA
5mA	0-5mA
10mA	0-10mA
30mA	0-30mA
50mA	0-50mA
100mA	0-100mA
300mA	0-300mA
500mA	0-500mA



Frequency Meter

Specification:

Maximum Frequency	Central Scale	Error
45 - 55 Hz	50 Hz	± 0.325 Hz
55 - 65 Hz	60 Hz	± 0.195 Hz
45 - 65 Hz	55 Hz	± 0.325 Hz
350 - 450 Hz	400 Hz	± 1.5 Hz



Product Ranges – 110V

Ratings	Scaling
50 Hz ± 0.15 Hz	45-55Hz
60 Hz ± 0.15 Hz	55-65Hz
55 Hz ± 0.25 Hz	45-65Hz
400 Hz ± 1.3 Hz	350 - 450 Hz

Ordering Part Code :

Type	Range	Sales Code
DC Voltmeter	1V	YPL1-V4FL1XXXAW0ST
	3V	YPL1-V3FL1XXXAW0ST
	5V	YPL1-V3XL1XXXAW0ST
	10V	YPL1-V3GL1XXXAW0ST
	30V	YPL1-V3HL1XXXAW0ST
	50V	YPL1-V3JL1XXXAW0ST
	100V	YPL1-V3ML1XXXAW0ST
	300V	YPL1-V3QL1XXXAW0ST
	500V	YPL1-V3RL1XXXAW0ST
	600V	YPL1-V3SL1XXXAW0ST
	0 - 50 mV	YPL1-V3AL1XXXAW0ST
	1 - 5 V	YPL1-I4YS1XXXAW0ST
	DC Ammeter	300 μ A
500 μ A		YPL1-I02L1XXXAW0ST
1mA		YPL1-I07L1XXXAW0ST
3mA		YPL1-I4HL1XXXAW0ST
5mA		YPL1-I16L1XXXAW0ST
10mA		YPL1-I09L1XXXAW0ST
30mA		YPL1-I4IL1XXXAW0ST
50mA		YPL1-I4JL1XXXAW0ST
100mA		YPL1-I4KL1XXXAW0ST
300mA		YPL1-I4LL1XXXAW0ST
500mA		YPL1-I4ML1XXXAW0ST
1A		YPL1-I4NL1XXXAW0ST
1.5A		YPL1-I4PL1XXXAW0ST
2A		YPL1-I4QL1XXXAW0ST
3A		YPL1-I4RL1XXXAW0ST
5A		YPL1-I4SL1XXXAW0ST
7.5A		YPL1-I4TL1XXXAW0ST
10A		YPL1-I4UL1XXXAW0ST
15A		YPL1-I4EL1XXXAW0ST
20A		YPL1-I4VL1XXXAW0ST
30A		YPL1-I4WL1XXXAW0ST
10-50mA DC		YPL1-I4XS1XXXAW0ST
4 - 20mA DC	YPL1-I12S1XXXAW0ST	

Ordering Part Code :

Type	Range	Sales Code
AC RMS Voltmeter	50V	YVL1-VRBML1XXXAWST
	100V	YVL1-VRBNL1XXXAWST
	150V	YVL1-VRAQL1XXXAWST
	300V	YVL1-VRAYL1XXXAWST
	600V	YVL1-VRBBL1XXXAWST
AC Average Voltmeter	3V	YVL1-VABIL1XXXAWST
	5V	YVL1-VABJL1XXXAWST
	10V	YVL1-VABKL1XXXAWST
	30V	YVL1-VABLL1XXXAWST
	50V	YVL1-VABML1XXXAWST
	100V	YVL1-VABNL1XXXAWST
	150V	YVL1-VAAQL1XXXAWST
	300V	YVL1-VAAYL1XXXAWST
	600V	YVL1-VABBL1XXXAWST
AC RMS Ammeter	1A	YVL1-IR6CL1XXXAWST
	3A	YVL1-IR6FL1XXXAWST
	5A	YVL1-IR6GL1XXXAWST
	10A	YVL1-IR6NL1XXXAWST
	30A	YVL1-IR6SL1XXXAWST
AC Average Ammeter	300 μ A	YVL1-IABPL1XXXAWST
	500 μ A	YVL1-IABQL1XXXAWST
	1mA	YVL1-IABRL1XXXAWST
	3mA	YVL1-IABSL1XXXAWST
	5mA	YVL1-IABTL1XXXAWST
	10mA	YVL1-IABUL1XXXAWST
	30mA	YVL1-IABVL1XXXAWST
	50mA	YVL1-IA6WL1XXXAWST
	100mA	YVL1-IABXL1XXXAWST
	300mA	YVL1-IABYL1XXXAWST
	500mA	YVL1-IA6ZL1XXXAWST
Frequency Meter	45-55Hz	YZL1-45273AW0000ST
	55-65Hz	YZL1-56273AW0000ST
	45-65Hz	YZL1-46273AW0000ST
	350-450Hz	YZL1-34273AW0000ST

For more details and product codes, please contact our local office



sifam tinsley
PRECISION INSTRUMENTATION

Sifam Tinsley Instrumentation Inc. Sifam Tinsley Instrumentation Ltd
3105, Creekside Village Drive, Unit 1 Warner Drive,
Suite No. 801, Kennesaw, Springwood Industrial Estate
Georgia 30144 (USA) Braintree, Essex, UK, CM72YW
E-mail Id : psk@sifamtinsley.com **E-mail:** sales@sifamtinsley.com
Web : www.sifamtinsley.com **Web:** www.sifamtinsley.com/uk
Contact No. : +1 404 736 4903 **Contact:** +44(0)1803615139