

Electro Mechanical Portfolio

PRECISION INSTRUMENTATION



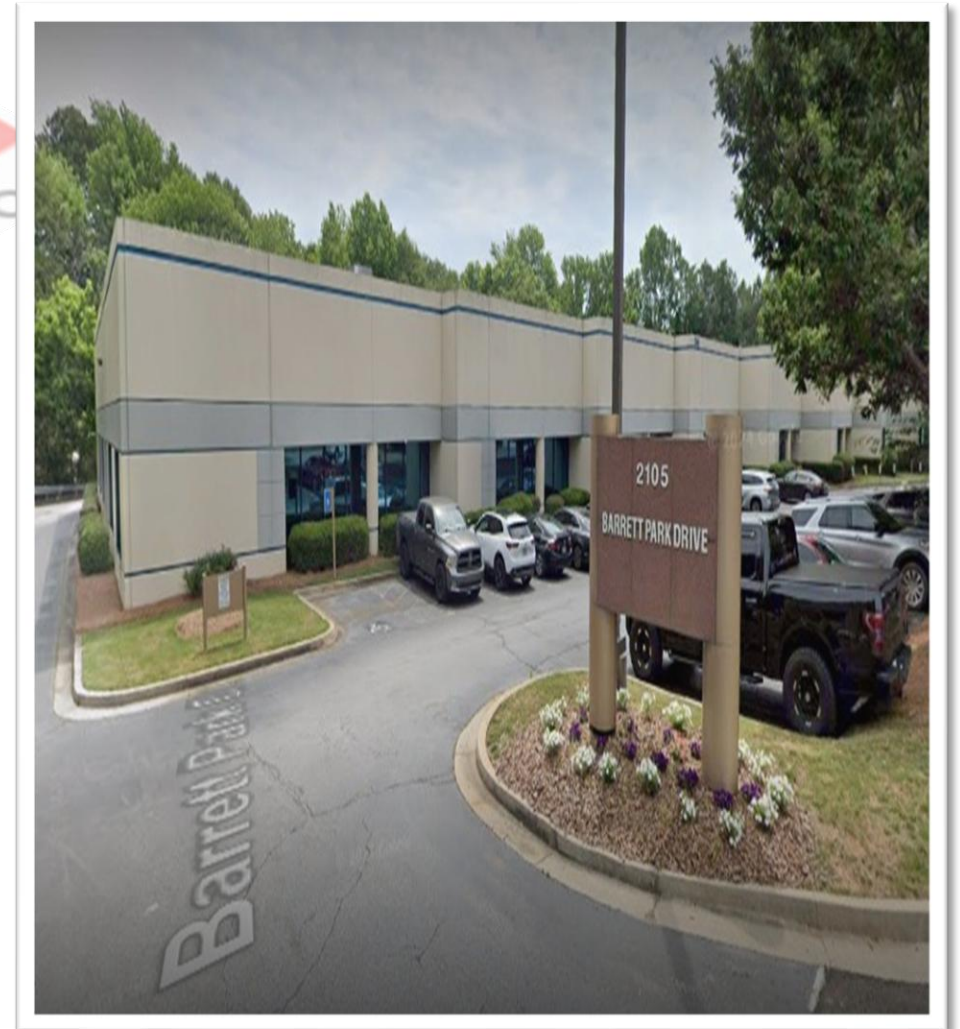
ST sifam tinsley

www.sifamtinsley.com

About US



- Registered with State of Georgia as "C" Corporation
- Office and Warehouse in Greater Atlanta Area (Kennesaw)
- Part of Global Group having Manufacturing Operations in Asia and Europe
- Electrical Panel Instrumentation
- Think Panel Meters..
...Think **Sifam Tinsley**





India

- Headquarters
- Manufacturing Setup
- R&D Setup



Poland

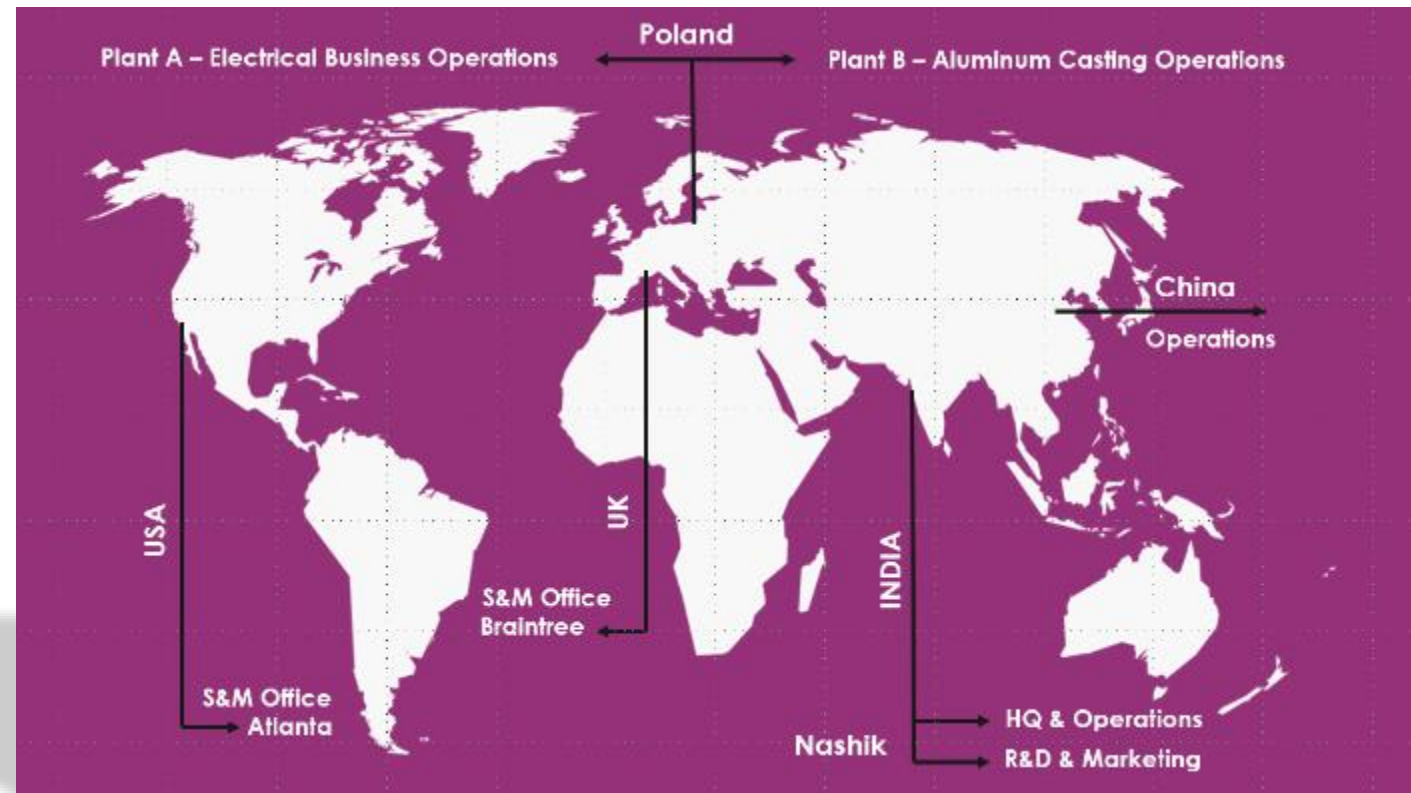
- Manufacturing Setup
- R&D Setup



UK, US

- Sales & Distribution
- Warehouse
- Mod Shop

Global Footprint



Business Horizons...

Instrumentation Products & Test Equipment

Standard product sales
Brand Labelling
Contract Manufacturing

Aluminium
Die-Casting
Customized part
manufacturing

Energy Solution Labs

Solutions for reducing
the cost of energy

Solar Solutions

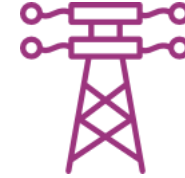
Manufacturing of Solar
Inverters



Markets



Solar/ Renewable
Power/ Alternate
Power Industry



Power Transmission/
Utilities/ Substations



Building Management
Systems/ Tenant
Metering/ Submetering



MRO segment &
electrical
contractors/
Electrical equipment
resellers



Original Equipment
Manufacturers
Data Centers
Motor Control
Centers



Panel Builders/
System Integrators

And many more...

The background features a watermark logo for 'sifam tinsley' with the tagline 'PRECISION INSTRUMENTATION'. The logo is tilted and overlaid with a dark red rectangle. There are also light blue and grey geometric shapes in the corners.

Product Portfolio

Electromechanical Products

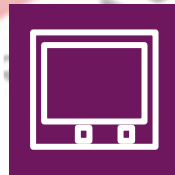
**Industrial Automation &
Process Control Devices**

**Power Monitoring & Control
Devices**

**Test & Measurement
Equipment**

Product Portfolio

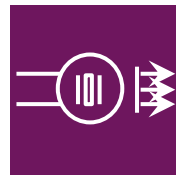
Power Monitoring & Control



Multifunction Meters, Power/ Energy Meters, Power Quality Analyzers



Energy Management & Data Analytics System Software

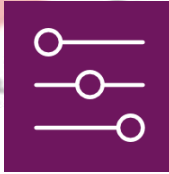


Electrical Transducers & Synchrosopes



Product Portfolio

Industrial Automation Devices



Temperature Controllers



I/O modules, Converters, Data Loggers,
Paperless Recorders, Power Supplies



Digital Panel Meters, Controllers



Isolators, Signal Conditioners



Product Portfolio

Test & Measurement Equipment



Multimeters, Clamp Meters,
Insulation Testers

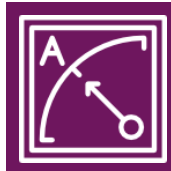


Environmental Meters,
Electrical Testers, Testing Tools



Product Portfolio

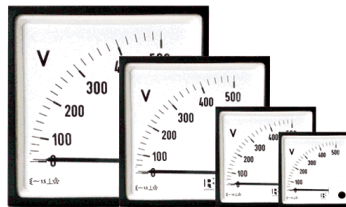
Electromechanical Products



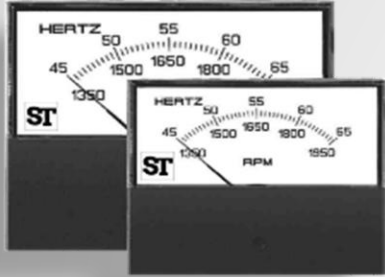
Analog Panel Meters, Analog
Switchboard Meters



Current Transformers, Switches &
Electrical Shunts



Analog Panel Meters Series



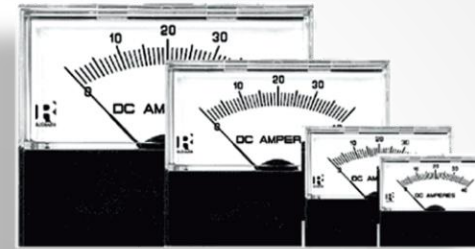
ANSI ANUSH SERIES

1.5", 2.5" Amps, Volts,
Freq, AC/DC



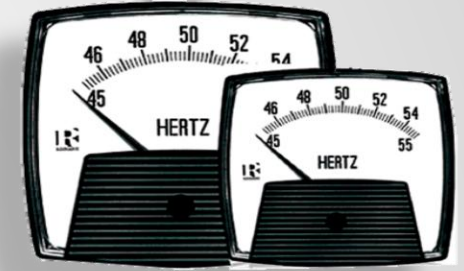
ANSI VISTA SERIES

2.5", 3.5" Amps, Volts,
Freq, AC/DC



ANSI CONTENDER SERIES

1.5", 2.5", 3.5", 4.5"
Amps, Volts, Freq, AC/DC



ANSI SMARTLOOK SERIES

2.5", 3.5" Amps, Volts,
Freq, AC/DC



ANSI SWITCHBOARD SERIES

TB/PJ element
Plastic/Metal Case



DIN - 90 Deg

4 sizes Amps, Volts, Freq,
Power, Power Factor
AC/DC

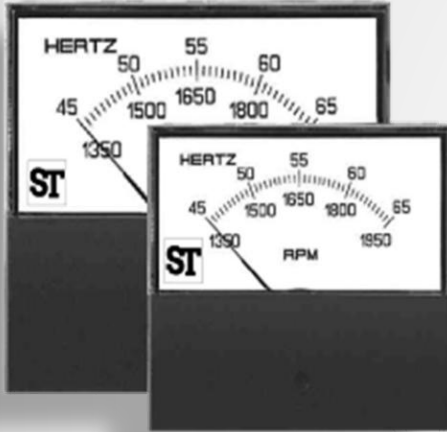


DIN - 240 Deg

4 sizes Amps, Volts, Freq, Power,
Power Factor AC/DC



ANSI Analog Panel Meters



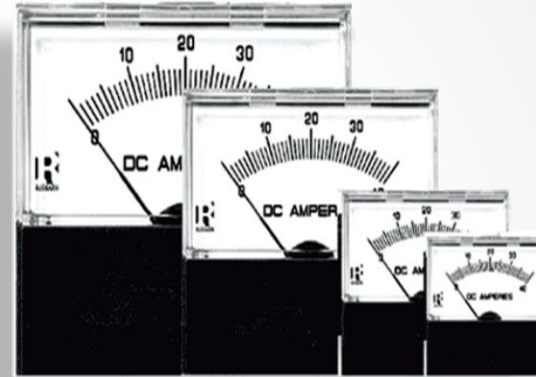
ANSI ANUSH SERIES

1.5", 2.5" Amps, Volts,
Freq, AC/DC



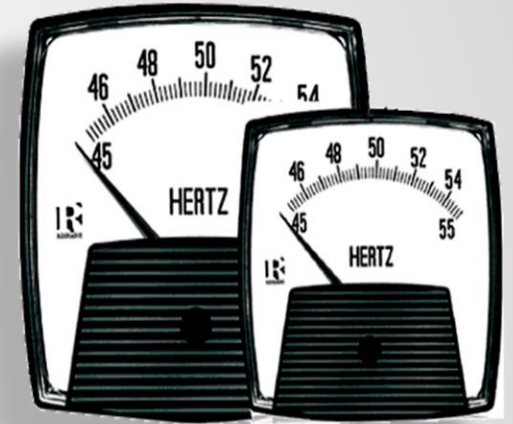
ANSI VISTA SERIES

2.5", 3.5" Amps, Volts,
Freq, AC/DC



ANSI CONTENDER SERIES

1.5", 2.5", 3.5", 4.5" Amps,
Volts, Freq, AC/DC

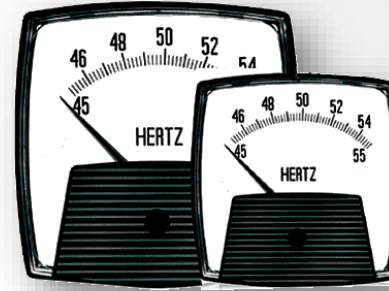


ANSI SMARTLOOK SERIES

2.5", 3.5" Amps, Volts,
Freq, AC/DC

Smartlook Series

- Available in 2.5" and 3.5" sizes
- UL Recognized (File No. E471457)
- Standard IP54 (NEMA 4); optional IP65 (NEMA 4X)
- Available in DC, AC (near-linear scales), and Rectified DC models
- Rugged Pivot & Jewel mechanism, shock-resistant
- 50A AC/DC and 750V AC ratings
- Interchangeable scales for AC Ammeters and DC Volt/Ammeters



Frequency Meters



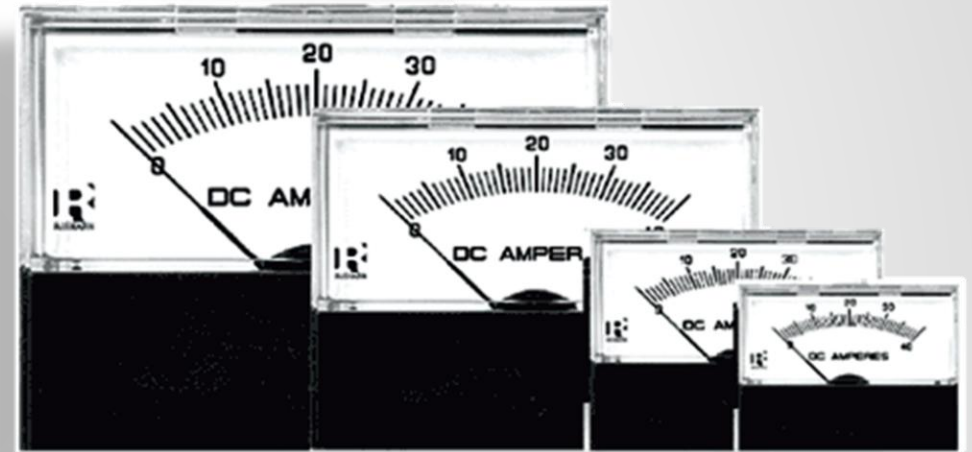
AC Ammeters – Direct Connected/ CT Operated



AC Voltmeters – Direct connected/ PT Operated

Contender Series

- Available in 1.5", 2.5", 3.5" & 4.5" sizes
- Measuring and indication of AC amps, volts, frequency and DC signals.
- Surface or window mounting.
- Rear zero adjuster on moving coil meters.
- High torque pivot and jewel movement.
- True RMS measurement meters.
- AC and DC inputs.

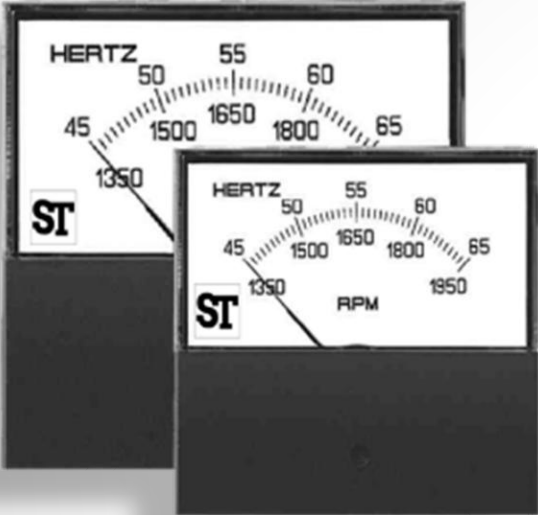


ANSI CONTENDER SERIES

1.5", 2.5", 3.5", 4.5" Amps,
Volts, Freq, AC/DC



Anush & Vista Series



ANSI ANUSH SERIES

1.5", 2.5" Amps, Volts,
Freq, AC/DC



ANSI VISTA SERIES

2.5", 3.5" Amps, Volts,
Freq, AC/DC

Switchboard Analog Meters- MCS Series



AC Ammeters – Direct Connected/ CT Operated



DC Ammeters – Left zero, Center Zero, Life Zero (4-20mA)



AC Voltmeters – Direct Connected/ PT Operated



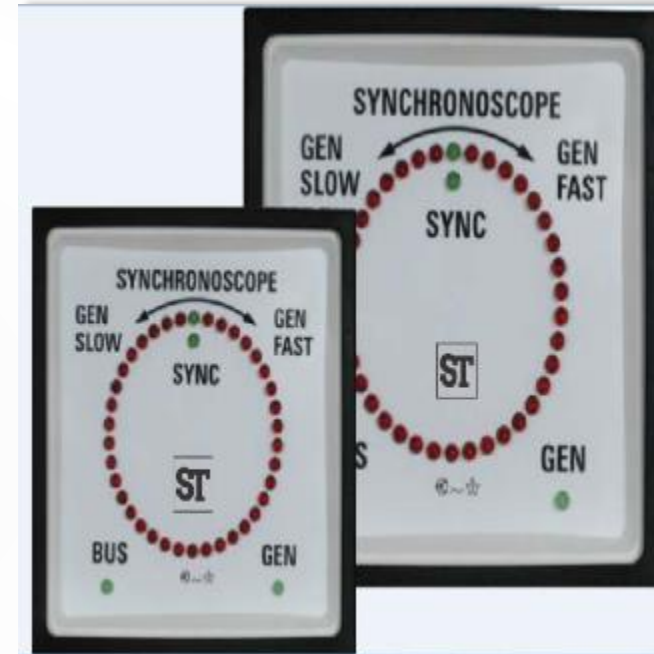
DC Voltmeters – Left zero, Center Zero, mV meters for shunt operation

Synchroscope



**ANSI Analog
Synchroscope**

Commercial and Industrial use



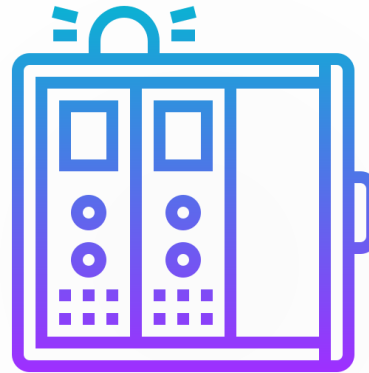
DIN LED Synchroscope

Available in DIN 96x96 and
144x144 mm size

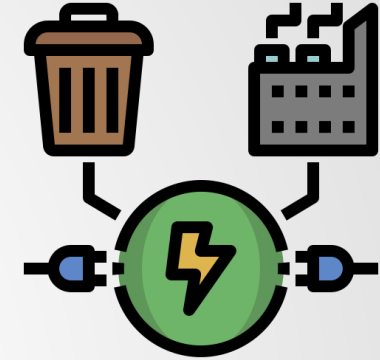
Functional Areas



Marine



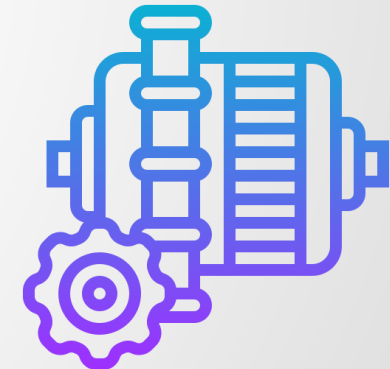
Switchgear/Control Panel/
Distribution Systems



Energy/Building
Management



Utility Management



Motor Monitoring



Omega Series (Instrument Current Transformers)

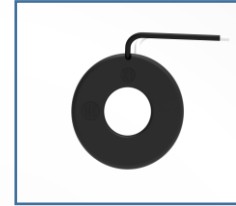
Omega 30: ANSI Series CTs

- Applicable standard : ANSI/IEEE C57.13
- Case: 10% glass filled polycarbonate, flame retardant grades classified UL 94V-0.
- Insulation Level: 600 Volts, 10KV BIL full wave
- Non-standard length can be provided on request
- Available in types - DRL, RL, RT, SFT, SHT, RBT, RBL & MR

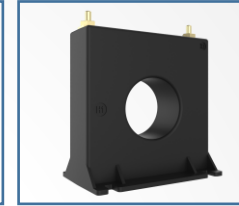


ANSI CTs-Popular Model In Demand

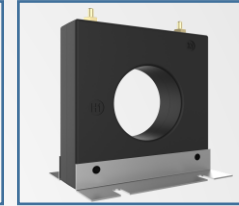
- 40+ ANSI CT Models
- Multiple Ratios & Window Sizes
- Specially designed for North American Market
- Ideal for Utility, Industrial & Commercial Applications



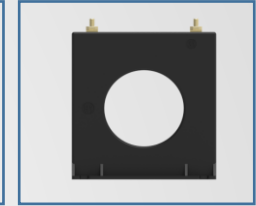
MODEL 2



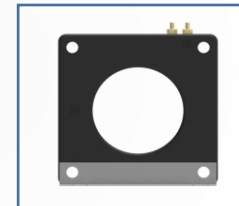
MODEL 5



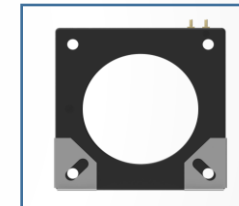
MODEL 6



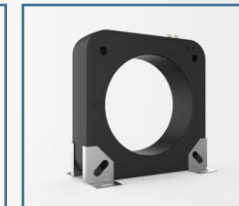
MODEL 7



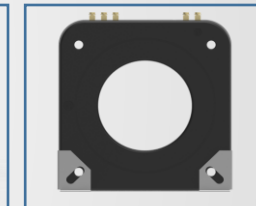
MODEL 8



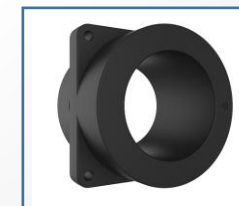
MODEL 120



MODEL 140



MODEL 145



MODEL 786



MODEL 296

Omega 10: Split Core CTs

Available in Five Types with different window sizes

- Accurate and UL listed
- Industry best locking system
- Compact size at low primary

| Size By # | Size Inches | Rated Current |
|-----------|-------------|---------------|
| A | 1.3 x 0.91 | 100-400 |
| E | 2.1 x 1.68 | 100-800 |
| B | 3.1 x 1.97 | 250-1600 |
| C | 4.7 x 3.15 | 250-3000 |
| D | 6.3 x 3.15 | 500-5000 |



Omega 10-LVH: Low Voltage Split Core CTs

Available in four window sizes

- Industry standard 0.333 V output
- The most compact LV CT
- Hinged for quick installation

| Size Inches | Primary Current |
|-------------|-----------------|
| 0.40 x 0.40 | 20,40,60 |
| 0.63 x 0.63 | 50,100,150 |
| 1.00 x 1.00 | 100,200,250 |
| 1.38 x 1.38 | 200,400,600 |



Omega Xmer: Square DIN CTs



- Bar Primary Type CTs ; CE Marked and ASTA approved
- Currently not Stocked in Atlanta but distributed worldwide by Rishabh
- Primary Current Rating up to 7500A
- Around 31 sizes available to accommodate different conductor types

Omega 30 & 10



- **CTs Stocked in Atlanta GA**
 - Next day delivery for fast moving ranges
 - Dynamic stocking program to learn customer consumption pattern
- **Each CT comes with a Calibration Certificate as a standard**
- **All the Omega 30, 10 Series CTs are UL Approved (cURus) with Canadian and US deviations**
- **Flexible 24" long leads as standard. Non Standard Length available on Request (Omega 30)**
- **Vibration Proof, "Stiff" clicking arrangement supplemented by Lock Screws (Omega 10)**



Omega Xmer: Protection Class DIN CTs



- Bar Primary Type Protection Class CTs ; CE Marked and ASTA approved
- Currently not Stocked in Atlanta but distributed worldwide by Rishabh
- Primary Current Rating up to 6000A
- Around 15 sizes available to accommodate different conductor types
- Available in different protection classes viz. 5P5, 10P5, 5P10 and 10P10



Omega 3 Phase Current Transformers

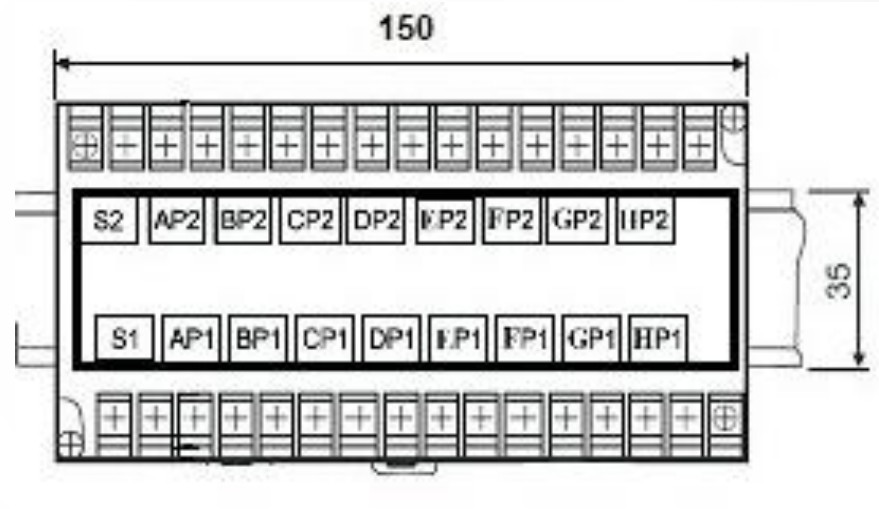
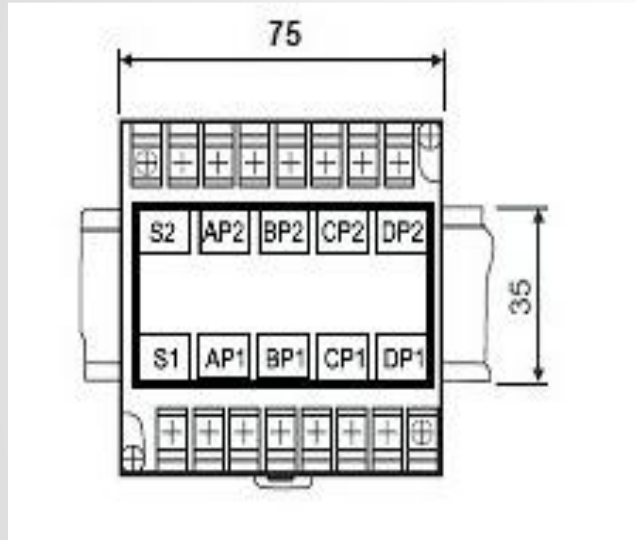


- CTs compliant to IEC 60044; CE Marked
- Available in 5 different sizes with different window sizes
- Current Rating from 100A to 800A
- Various mounting options like DIN Rail, Bus bar and Wall mounted
- Terminals with self lifting screws with dual connection facility giving access from both sides of transformers
- Wireless sealable terminal covers



Omega Summation CTs: Sigma Series

- CTs compliant to IEC 60044; CE Marked
- Available in 2 types – Sigma 75 and Sigma 150

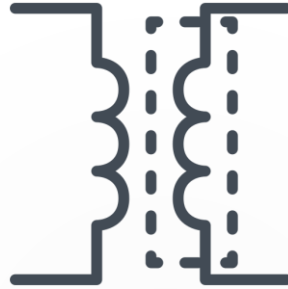


- Sigma 75: Summation of 2 or 3 or 4 Secondary CT Currents
- Sigma 150: Summation of 5 or 6 or 7 or 8 Secondary CT Currents

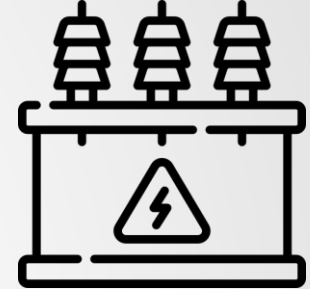
Application



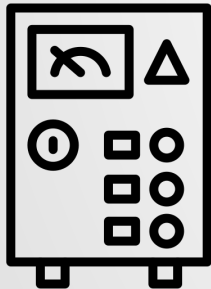
Metering



Isolation



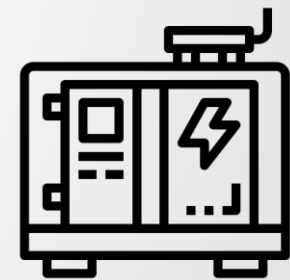
Transformer Monitoring



Switchgear and Panelboards



Energy Monitoring

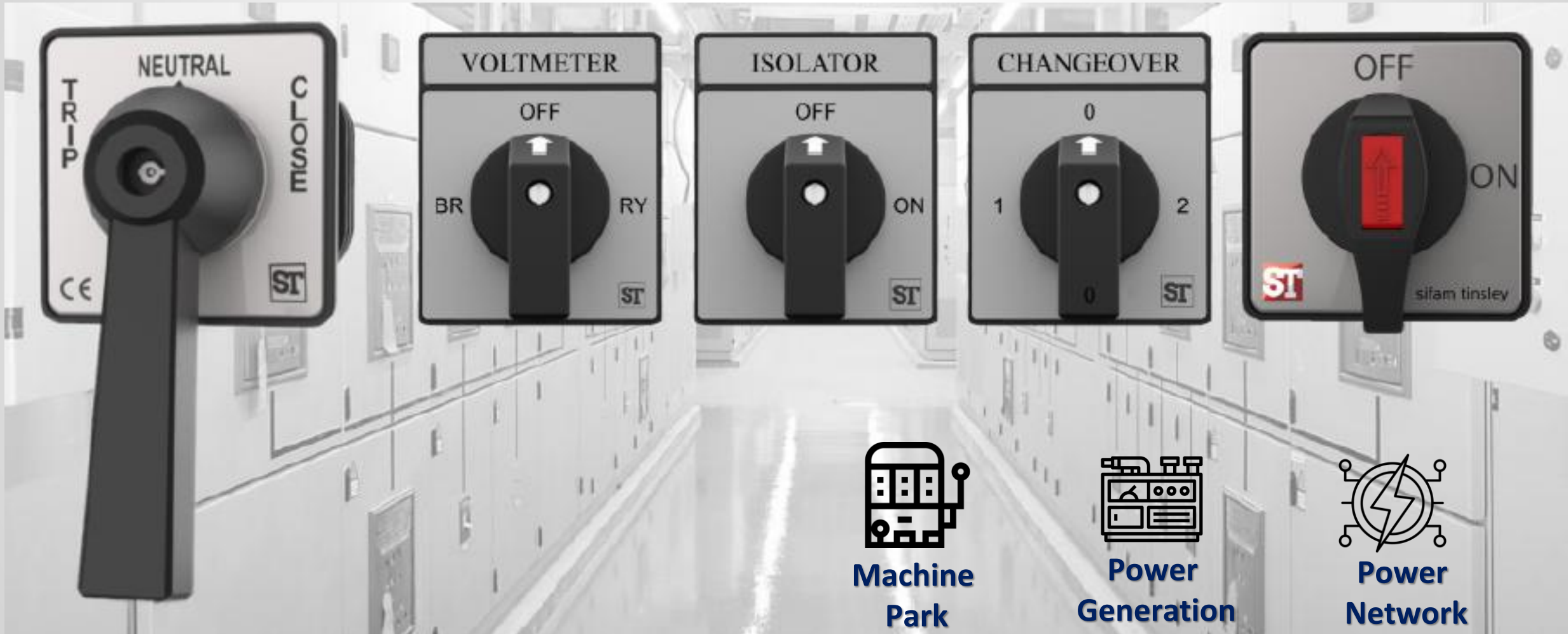


Generator Monitoring



Selector Switches Series

Selector Switches



Selector Switches-Multiple Ranges



ISOLATOR



SPRING RETURN



**TRIP-NEUTRAL-
CLOSE SERIES**



CHANGEOVER



AMMETER/VOLTMETER

Types of Switches

ON-OFF Switches

Change over Switches

Multi-step Switches

Volt-Ammeter Switches

Breaker control switches

Selector Switches

Mains Switching

Coolant Pumps

Spring return switches



PHASE SELECTOR SWITCH

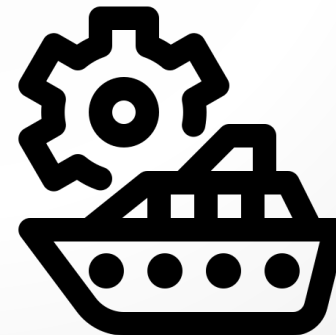
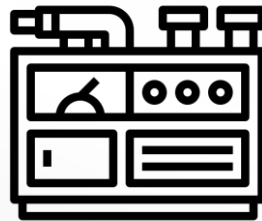
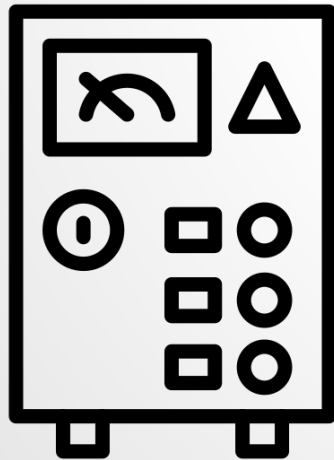


EPSILON SWITCH

Features Highlight

- **Key Features**

- Versatile Use – Suited for control, instrumentation, and motor applications
- Wide Current Range – Available from 6A to 200A
- Compact & Durable – Space-saving design with robust performance
- Flexible Setup – Multi-pole, stackable configurations
- Quick Installation – Captive screws, lug terminals, and driver guides
- Enhanced Safety – IP20 finger-safe terminals
- Multiple Functions – ON-OFF, changeover, selector, and meter switching

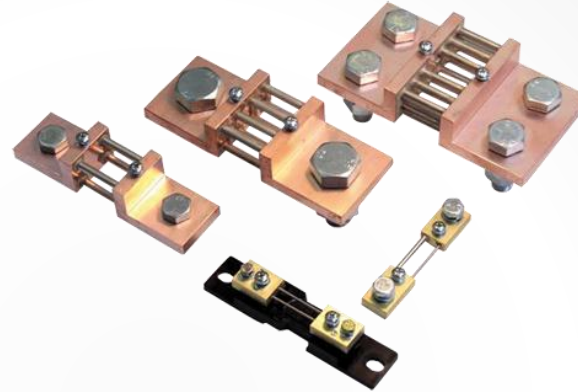




Electrical Shunts

Electrical Shunts

- Extends DC range for moving-coil ammeters
- Accuracy class 0.5
- Measuring Range upto 15K Amp with desired voltage drop of 50mV/60mV/75mV/100mV/150mV
- DIN rail mountable (35 mm)
- Optional coatings: Lacquer, Silver, or Nickel



ROD SHUNTS



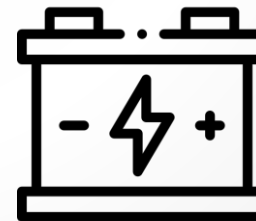
PLATE SHUNTS



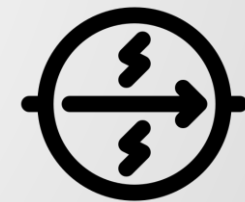
Solar Power System



Data Centre & UPS Systems



Battery Monitoring



DC Current Measurement



Prashant Kajale (PK)

Sifam Tinsley Instrumentation Inc.

2105 Barrett Park Drive, Unit 105, Kennesaw GA 30144

Call: 404 736 4903; Email: psk@sifamtinsley.com;

Visit: www.sifamtinsley.com